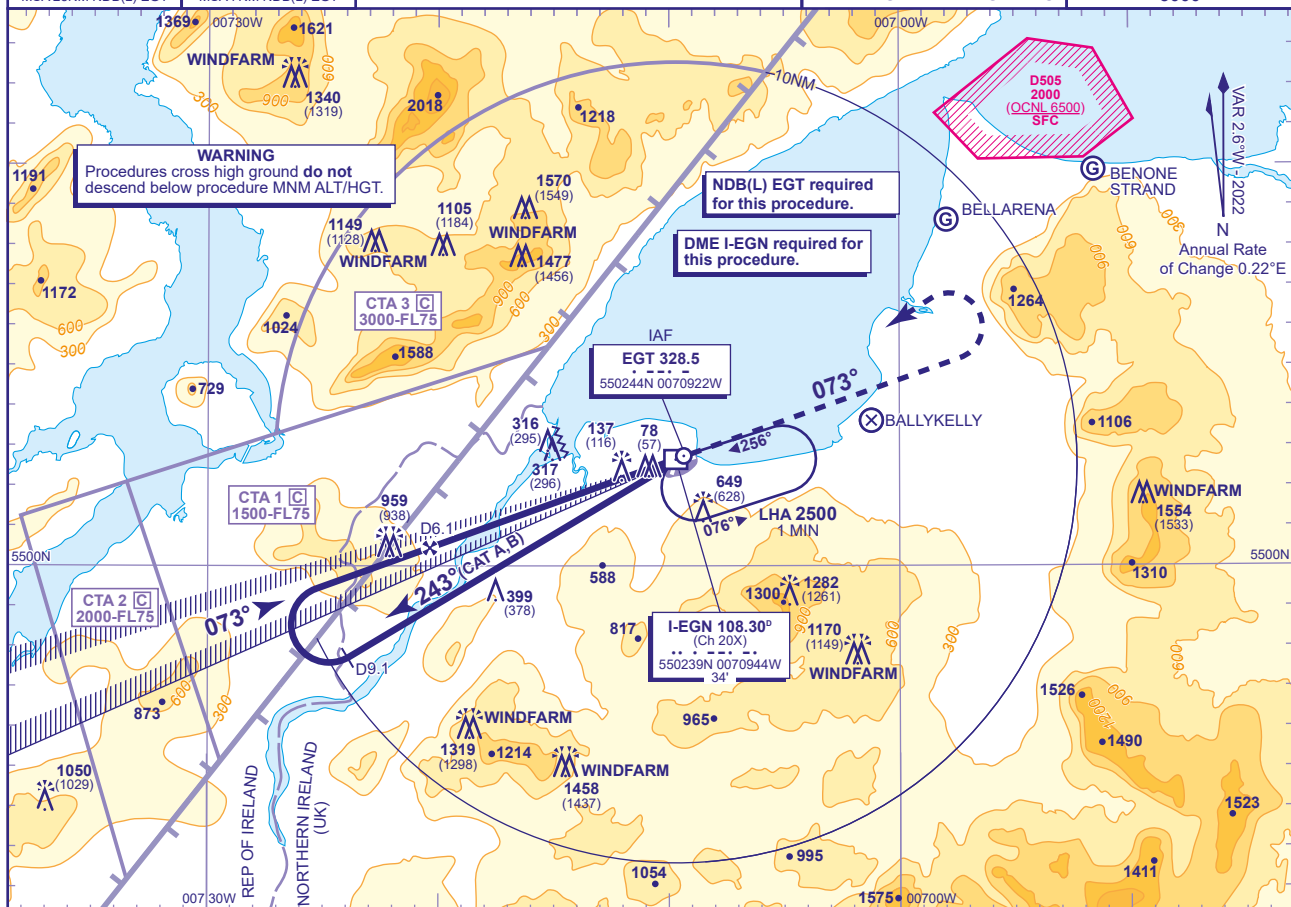
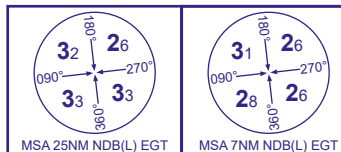


APP	123.625	EGLINTON APPROACH	AD ELEVATION	23
TWR	134.155	EGLINTON TOWER	THR ELEVATION	21
ATIS	119.380	EGLINTON INFORMATION	OBSTACLE ELEVATION	
			1570 AMSL	
			(1549) (ABOVE THR)	
			BEARINGS ARE MAGNETIC	

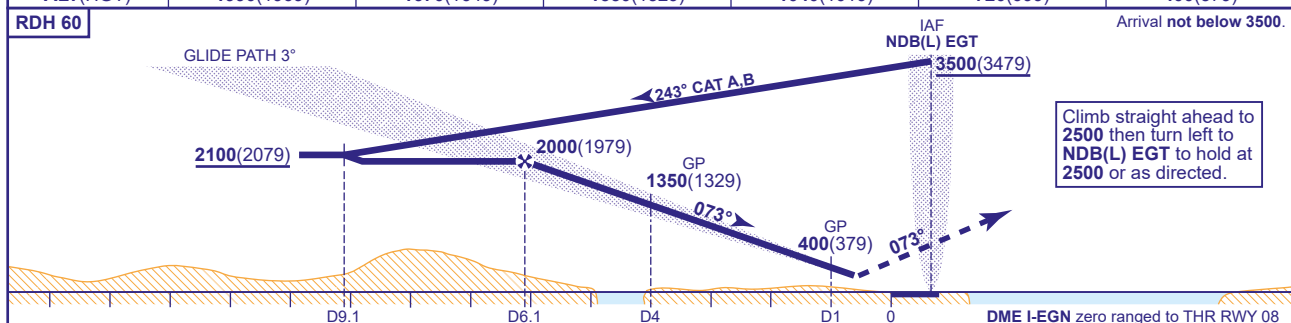
TRANSITION ALTITUDE
3000



RECOMMENDED PROFILE GLIDE PATH 3.0°, 318FT/NM

DME I-EGN	6	5	4	3	2	1
ALT(HGT)	1990(1969)	1670(1649)	1350(1329)	1040(1019)	720(699)	400(379)

Arrival not below 3500.



Aircraft Category		A	B	Rate of descent	G/S KT	160	140	120	100	80
OCA (OCH)	CAT I	293(272)	293(272)		FT/MIN	850	740	640	530	420
VM(C)OCA (OCH AAL)	Total Area	950(927)	950(927)							
	North of RWY 08/26	430(407)	580(557)							

NOTES	1	Lowest altitude to commence procedure from hold is 2500 .
	2	LOC offset 2.7° from RWY 08 C/L.
	3	DME not usable below 3500 between 140° and 185° due to terrain effects.
	4	Aircraft are permitted to enter the Eglinton CTA areas whilst using these procedures and under the control of Eglinton ATC.

CHANGE (2/24): MSA 7NM SW SECTOR. LHA EGT HOLD. OCA(OCH). HEIGHT/ALTITUDE IF D9.1.